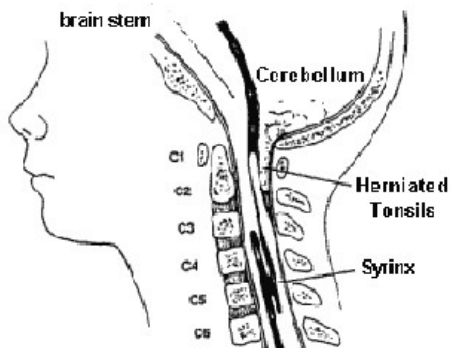


May is *SYRINGOMYELIA* Awareness Month



Syringomyelia (sear-IN-go-my-EEL-ya)
Syringomyelia, often referred to as SM, is a chronic spinal cord disorder/disease. When the normal flow of spinal fluid is disrupted, fluid is forced into the spinal cord, forming a cavity called a syrinx.

This syrinx often expands and elongates over time, destroying the center of the spinal cord. As the nerve fibers inside the spinal cord are damaged, a wide variety of symptoms can occur, depending upon the size and location of the syrinx.

SM can also occur as a complication of trauma, meningitis, tumor, arachnoiditis, or a tethered spinal cord. In these cases the syrinx forms in the section of the spinal cord damaged by these conditions. As more people are surviving spinal cord injuries, more cases of post-traumatic SM are being diagnosed as the syrinx can form years after the trauma.

Together We Can.... ASAP.org



Patients, Family & Friends



Professionals



Donors & Supporters

The American Syringomyelia & Chiari Alliance Project, Inc. (ASAP) is a non-profit, 501 (c)(3), member supported organization, founded by Barbara and Don White. ASAP has been providing research, education and support since May 1988.